



www.rajenterprisesllp.com

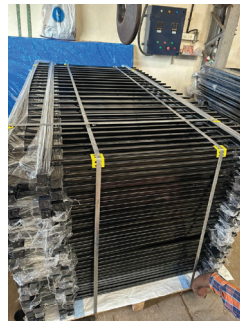
Engineered for Strength Crafted for Generations



About Raj Enterprises LLP

Family owned and founded in 2004, Raj Enterprises LLP, has quickly rose to one of the premier Ornamental Steel and subsequently in Ornamental Aluminum manufacturers in Pune, India. We are proud to employ over 150 individuals between our manufacturing facilities located in industrial hub of Pune, India. Every inch of our products are manufactured here, in fact, right here in our premise.

Our approach to business remains the same throughout the years. We are dedicated to providing innovative quality products that exceed the industry standards for quality and durability. Also, we are dedicated to providing reliable and outstanding service. We like to treat every customer like they are part of our very own family and will always go above and beyond to make sure everyone is satisfied.



Our Vision

To become a leading name in ornamental steel and aluminum solutions. We aim to be recognized for strength, trust, and long-lasting excellence.

Our Mission

To manufacture high-quality, durable fencing solutions with precision and innovation. We are committed to exceeding customer expectations through reliable service and superior craftsmanship.



Our Values

Quality First - Built to exceed standards in durability and finish

Innovation - Modern solutions with strong design thinking

Customer Commitment - Every client is treated like family

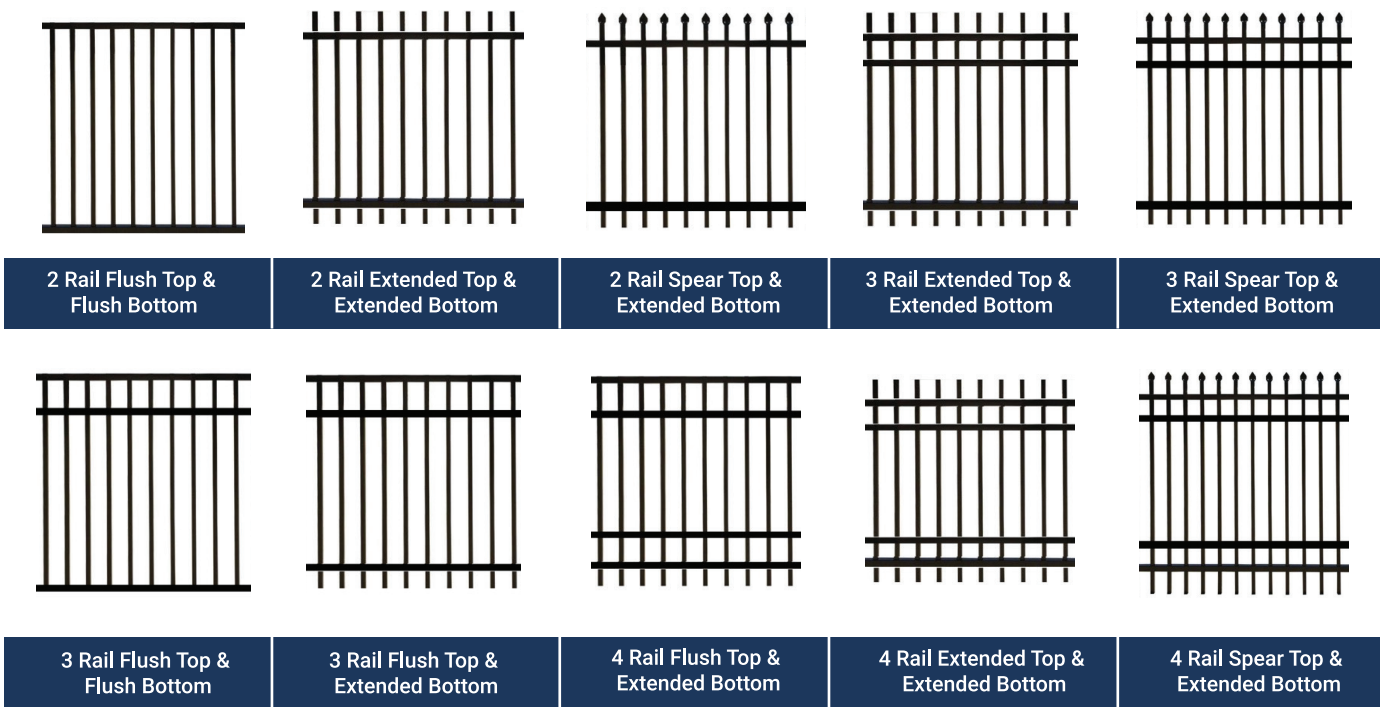
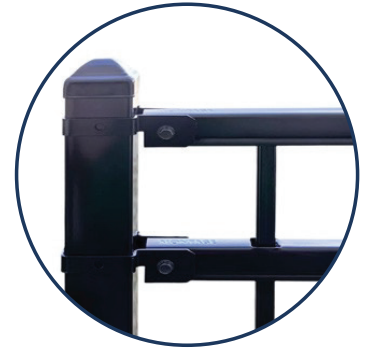
Integrity - Honest, transparent, and reliable in every step

Excellence - Consistent performance through skilled craftsmanship

Ornamental Steel Fences, Gates and Related Hardware

● ORNAMENTAL STEEL FENCES - DESIGNS (RESIDENTIAL AND COMMERCIAL)

a) C Channel Fence Panels and Gates.



● MATERIAL USED:

Pre Galvanized Coils for C Channel and Square Tubes.

C Channel -----1 1/2" x 1 1/2" x 1 1/2" x 16 Guage

Pickets -----3/4" x 3/4" x 18Ga (Comemrcial)

-----5/8" x 5/8" x 18Ga (Residential)

● FINISH:

Powder Coated -----High Gloss PP

Warranty-----10 Years on finish and coating.

● ALL PANELS COME IN SIZES OF

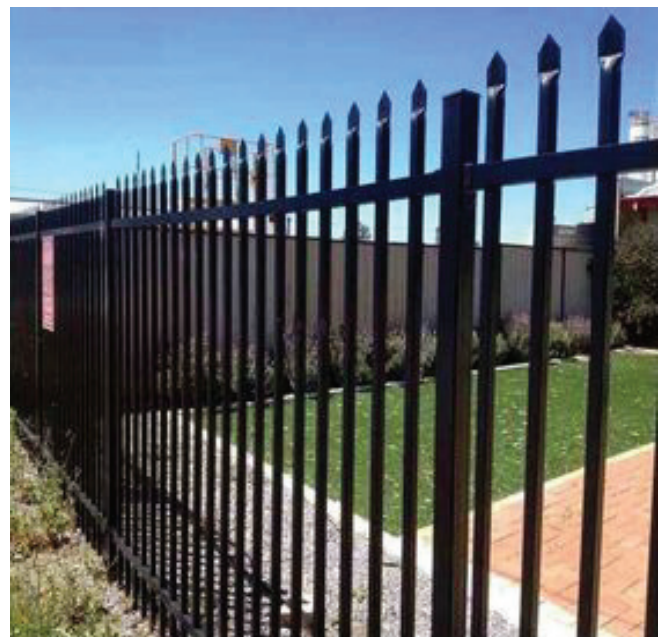
Height x Width -----4' x 8' Inches

Height x Width -----5' x 8' Inches

Height x Width -----6' x 8' Inches

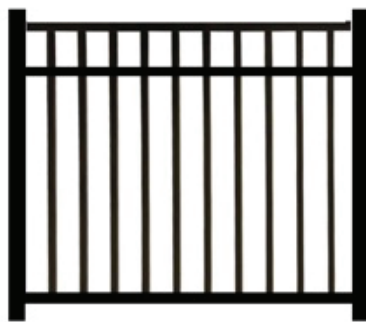
Height x Width -----7' x 8' Inches

Height x Width -----8' x 8' Inches



Ornamental Steel Fences, Gates and Related Hardware

● ORNAMENTAL STEEL GATES - DESIGNS (RESIDENTIAL AND COMMERCIAL)



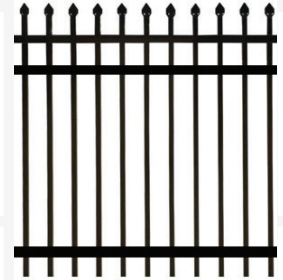
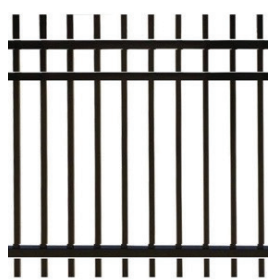
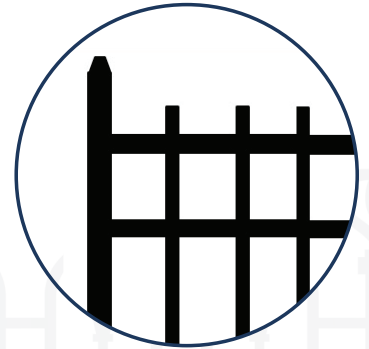
Swing Gates come in Heights according to Panels with standard width of 4' and 5'



Ornamental Steel Fences, Gates and Related Hardware

● ORNAMENTAL STEEL FENCES & GATES - DESIGNS (RESIDENTIAL AND COMMERCIAL)

b) Face Welded Panels and Gates



2 Rail Extended Top and Extended Bottom

3 Rail Extended Top and Extended Bottom

2 Rail Spear Top and Extended Bottom

3 Rail Spear Top and Extended Bottom

● MATERIAL USED:

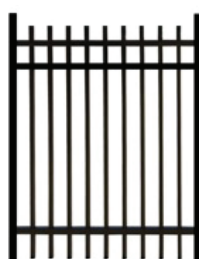
- Pre Galvanized Coils for C Channel and Square Tubes.
- Rail Tubes -----1 1/2" x 1 1/2" x 1 1/2" x 16 Gauge
- Pickets -----3/4" x 3/4" x 18Ga (Commercial)
- 5/8" x 5/8" x 18Ga (Residential)

● FINISH:

- Powder Coated -----High Gloss PP
- Warranty-----10 Years on finish and coating.

● ALL PANELS COME IN SIZES OF

- Height x Width -----4' x 8' Inches
- Height x Width -----5' x 8' Inches
- Height x Width -----6' x 8' Inches
- Height x Width -----7' x 8' Inches
- Height x Width -----8' x 8' Inches

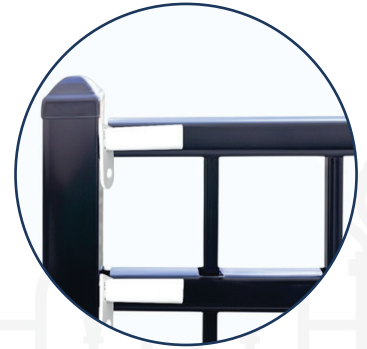


Swing Gates come in Heights according to Panels with standard width of 4' and 5'

Ornamental Steel Fences, Gates and Related Hardware

● ORNAMENTAL STEEL FENCES & GATES - DESIGNS (RESIDENTIAL AND COMMERCIAL)

c) Tubular Fences - Center welded.



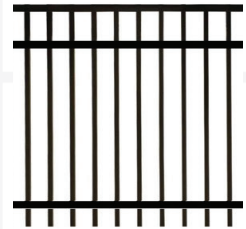
2 Rail Flush Top and Flush Bottom



2 Rail Extended Top and Extended Bottom



3 Rail Flush Top and Flush Bottom



3 Rail Flush Top and Extended Bottom

● MATERIAL USED:

Pre Galvanized Coils for Tubes.

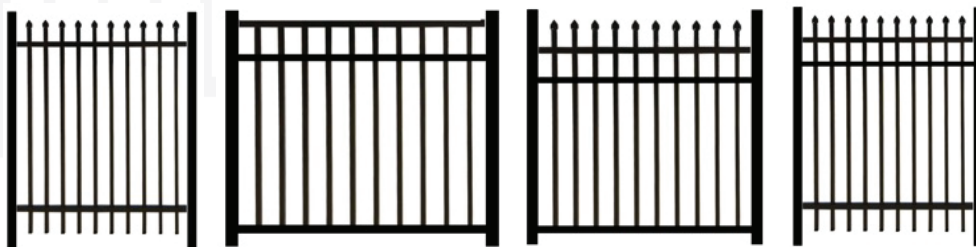
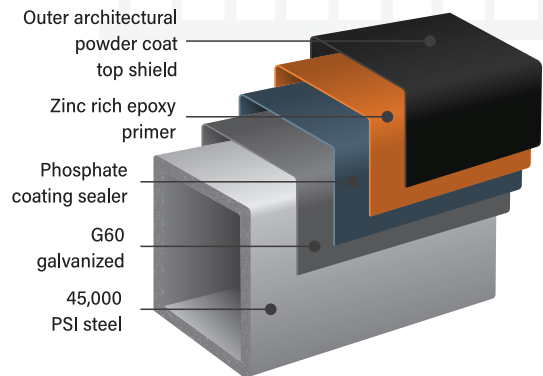
Rail Tubes ----- 1 1/2" x 1 1/2" x 1 1/2" x 16 Gauge
 Pickets ----- 3/4" x 3/4" x 18Ga (Comemrcial)
 ----- 5/8" x 5/8" x 18Ga (Residential)

● FINISH:

Powder Coated -----High Gloss PP
 Warranty-----10 Years on finish and coating.

● ALL PANELS COME IN SIZES OF

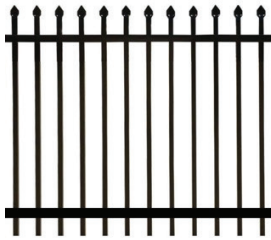
Height x Width -----4' x 8' Inches
 Height x Width -----5' x 8' Inches
 Height x Width -----6' x 8' Inches
 Height x Width -----7' x 8' Inches
 Height x Width -----8' x 8' Inches



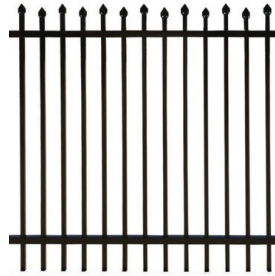
Swing Gates come in Heights according to Panels with standard width of 4' and 5'

Aluminum Fence Panels and Gates (Hidden Screw Design)

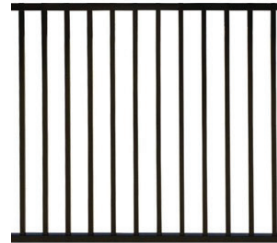
ALUMINUM FENCE PANELS (HIDDEN SCREW DESIGN)



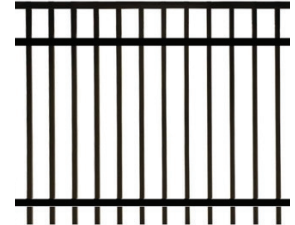
2 Rail Spear Top
Extended Bottom



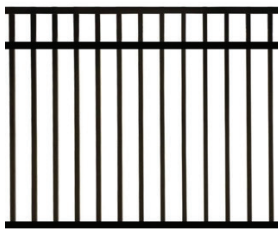
2 Rail Alternated Height
Spear Top Extended Bottom



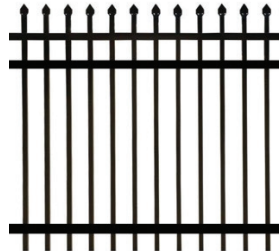
2 Rail Flush Top
Flush Bottom



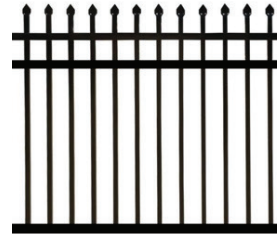
3 Rail Flush Top
Extended Bottom



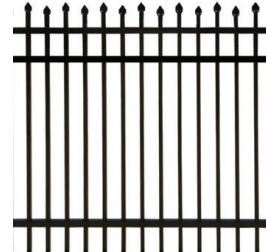
3 Rail Flush Top
Flush Bottom



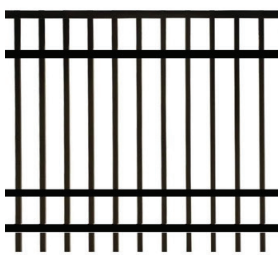
3 Rail Spear Top
Extended Bottom



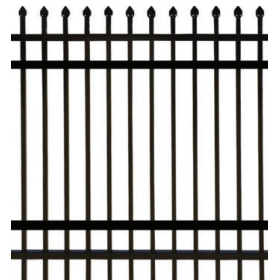
3 Rail Spear Top
Flushed Bottom



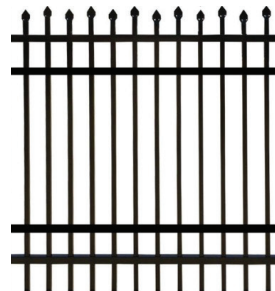
3 Rail Alternated Height
Spear Top Flushed Bottom



4 Rail Flush Top
Extended Bottom



4 Rail Spear Top
Extended Bottom



4 Rail Alternated Height
Spear Top Flushed Bottom

MATERIAL USED:

Aluminum Grade 6063 for Rails sliders and Pickets.

Rail Tubes -----1 "x 1 " x 1 "x 16 Guage

Pickets -----5/8"x 5/8"x 18Ga (Residential)

FINISH:

Powder Coated -----High Gloss PP

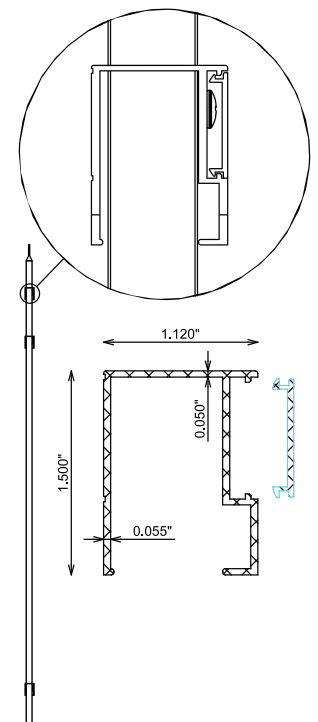
Warranty -----10 Years on finish and coating.

ALL PANELS COME IN SIZES OF

Height x Width -----4' x 6' Inches

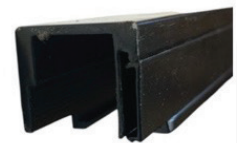
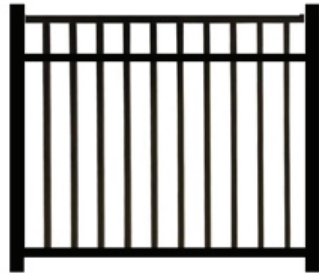
Height x Width -----5' x 6' Inches

Height x Width -----6' x 6' Inches



Aluminum Fence Panels and Gates (Hidden Screw Design)

● ALUMINUM GATES (HIDDEN SCREW DESIGN)



Swing Gates come in Heights according to Panels with standard width of 4' and 5'



Ornamental Fence Fittings

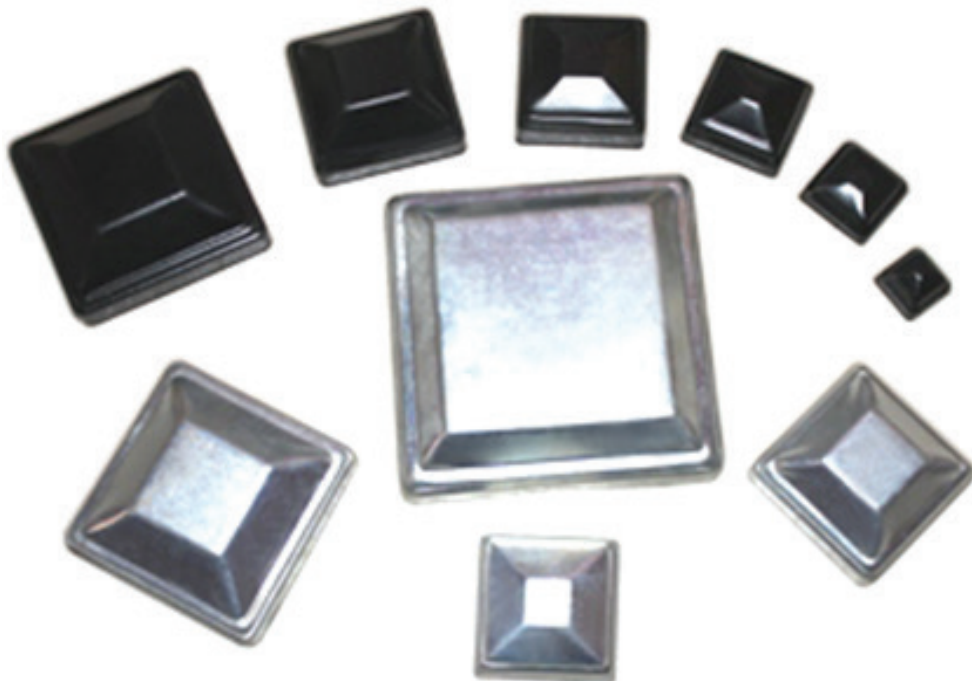
● BARREL HINGES

IN SIZE - 3", 5" AND 7" WITH SS 304 (HEAVY DUTY) BALL



● PRESSED STEEL CAPS

TUBES SIZES - 1", 1 1/2", 2", 2 1/2", 3", 4" AND 6"



Ornamental Fence Fittings

● PANEL MOUNTING BRACKETS - STRAIGHTS AND BIASABLES

RAIL SIZES - 1", 1 ½" AND 2" .



● HINGES - ADJUSTABLE

FOR GATE SIZES 1", 1 ½", 2" AND 2 ½"



Ornamental Fence Fittings

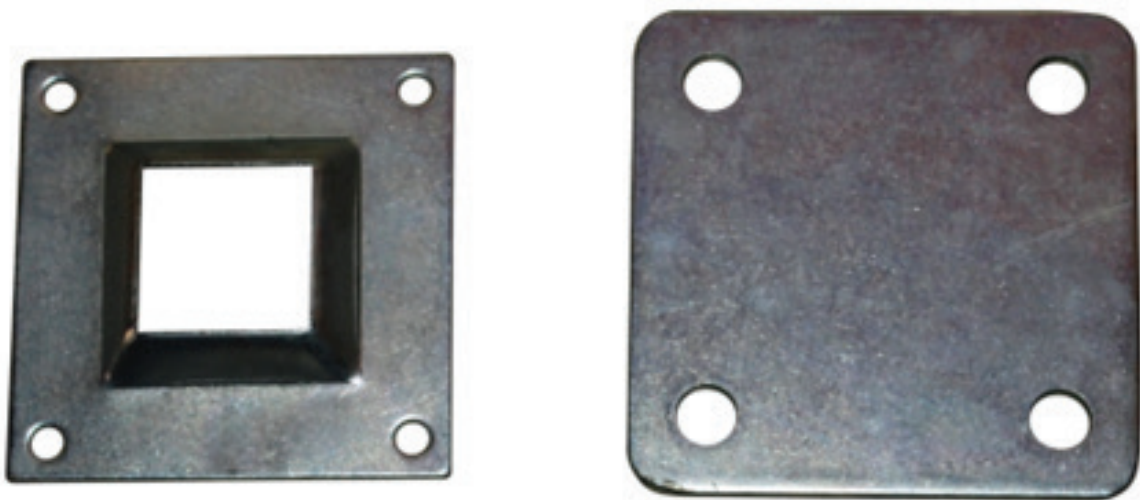
● WELD ON - BUTT HINGES

SIZE - 2 ¼" X 3 ½", 3" X 3", 4" X 4", 5" X 5", 6" X 6"



● FLOOR FLANGES, RAISED AND FLAT

SIZE - 3" X 3", 4" X 4" AND 6" X 6"



Ornamental Fence Fittings

● GATE LATCHES - STRIKERS AND RECIEVERS.

IN S IZE - 1", 1 1/2", 2", 2 1/2"



C Channel Rails Fittings

● WRAP AROUND BRACKETS

IN SIZE 2" AND 2 ½"



● END BRACKETS

IN 1" AND 1 ½"



C Channel Rails Fittings

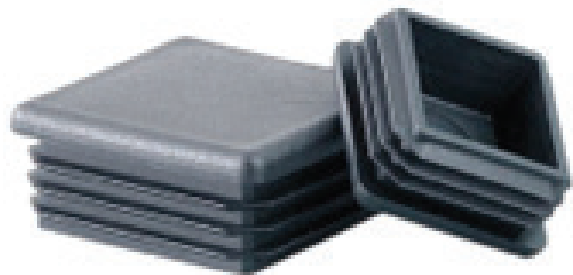
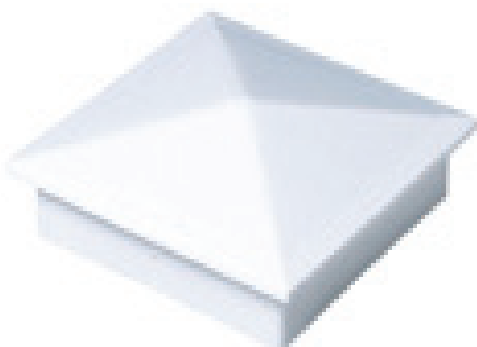
● LINE BRACKETS

IN SIZE 2" AND 2 1/2"



● PLASTIC CAPS AND PLUGS

IN SIZES - 5/8", 1/2", 3/4", 1", 1 1/2", 2", 2 1/2"



Application



Precision Aluminum. Powerful Steel. Perfect Fencing.

Contact Us

 Raj Enterprises LLP Unit - 1,
Elcon Compound, Wadki, Pune - 412308

 +91 9175922252 / +91 9822282299

 Juzer@rajenterprisesllp.com /
Taher@rajenterprisesllp.com

 www.rajenterprisesllp.com



Scan to know More

